

ACCE Consultants on Demand

# Community Wide Planning & Visioning

Overview

*OpX Group, Inc.*



2008

This report contains confidential information of the OpX Group, Inc. It is intended solely for the information and use of parties of the OpX Group, Inc. Such confidential information may not be used, reproduced, or disclosed to any other parties for any other purpose without the expressed written permission of OpX Group, Inc.

*“At a time when short-term thinking dominates the economic and political worlds while major challenges demand long-term solutions, we have a clear dilemma. Who will take responsibility for the future of the region? Who will be stewards of place?” (Regional Stewardship: A Commitment to Place; Alliance for Regional Stewardship; <http://www.acce.org/WorkArea/showcontent.aspx?id=7844>.)*

**A**re you ready to discover the art & science of excellence in your community wide planning & visioning? OpX Group provides services, tools and templates for communities to reflect, re-engineer and redesign their vision to sustain growth and profitability. Innovative planning, strategy and visioning will open new channels of excellence within your community.

OpX Group offers unique attributes which make us the right partner for your community. Our team combines knowledge, experience and determination to help any community navigate expertly through today’s unpredictable economic climate. We service a diverse multi-faceted client base. The expertise and credibility we bring as an industry leader are what attracts numerous customers.

Our passionate nature will captivate, motivate and inspire any audience to share with others and create positive change. Our proven approach to community wide planning and visioning has resulted in measureable growth and success for our clients.

OpX Group recognizes that many communities are seriously fragmented, and they are committed to bringing the fragments together, committed to fostering the shared understanding and priorities that will permit community solidarity in pursuit of goals. To do this it is important to bring together community stewards, draw young potential leaders into the fray and make sure that leaders in the region come to know and understand different sectors so that true community deliberation can take place.

Community wide planning and visioning is much more complex and goes much deeper than long-range planning or even planning on a single community initiative. It requires that the community be approached holistically, as a system of inter-working elements that must be coordinated collaboratively to reach maximum potential.

The starting point is to identify a complete list of the key stakeholders and regional stewards and bring them together to generate core values, vision, key benchmarks and strategies that define the community’s future. The key is to use a process that provides an opportunity for broad public participation while at the same time keeping the initiative focused and progressing.

There are 6 core areas of a community that form the foundation for achieving community excellence.

- Education
- Economic Development
- Quality of Life
- Government
- Infrastructure
- Private Sector Leadership

OpX Group, Inc. will ensure that each of these areas is linked by the over-arching Community Vision and that each will have a compelling vision of its own to drive strategies and actions.

### Initial Phase

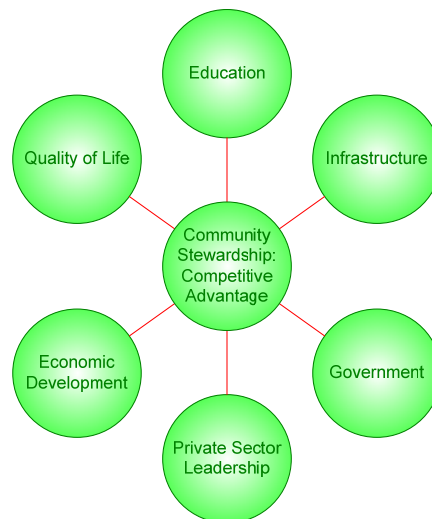
This first phase generally takes 6 to 8 months. The key deliverables will be:

- Establishment of a diverse community based Steering Committee
- Jointly developed Community Core Values
- A clear and compelling Community Vision
- A set of key Community Benchmarks and measures
- Articulated and explicit key Strategies that define the community’s future
- A set of Action plans for collaboratively moving the strategies forward

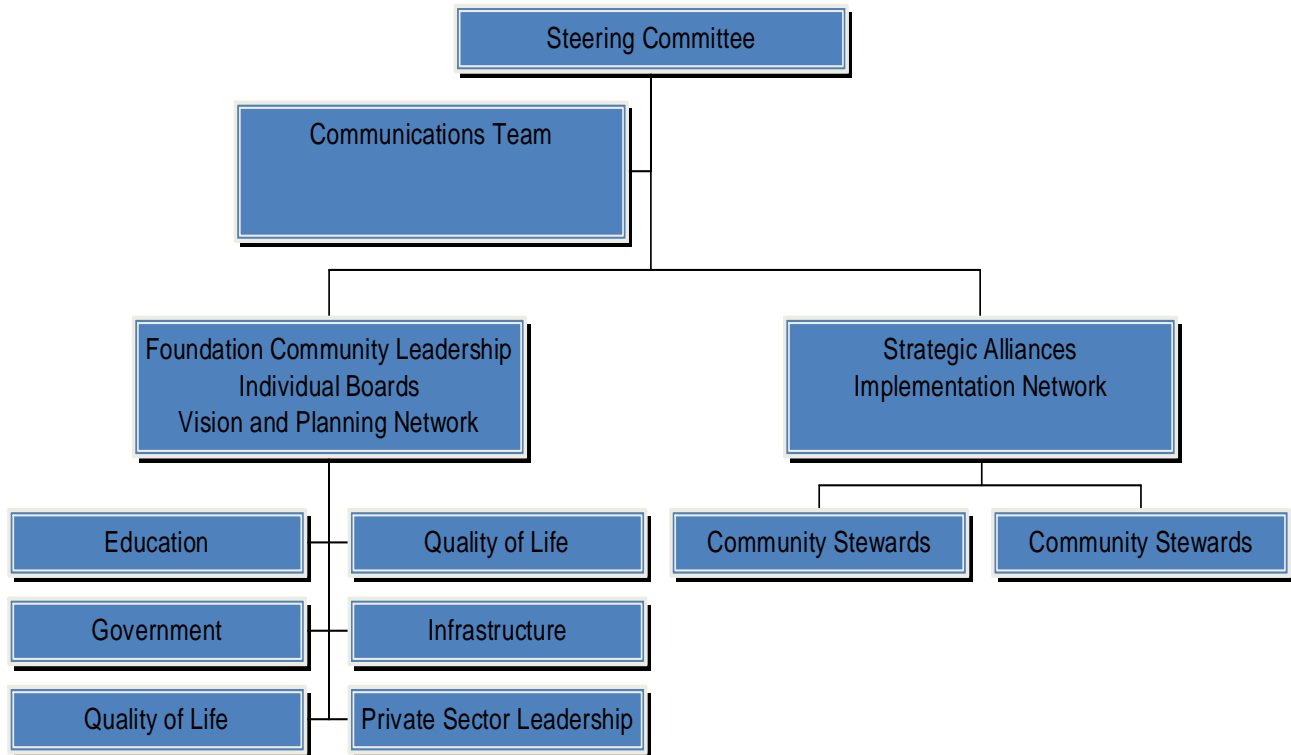
### Full Implementation Phase

Full Implementation of a newly developed Community Vision and Plan may take as long as 5 to 10 years. This phase requires a large number of community stewards who pledge to drive the vision and the plan forward according to established action plans and timelines. The process requires:

- Measurements of annual progress for each strategy
- Constant communication with the community
- Accountability and leadership from the community based Steering Committee
- Recruitment and involvement of action-oriented community stewards



**Community Visioning and Planning Network**



**What is a Community Steward?**

- The foundation on which the Community Vision and Strategic plan are built
- Implementation Network for Strategic Alliances
- Committed to the Community Vision and to making it a reality
- Measure progress of Action Steps and Benchmarks and report annually
- Re-direct Action Steps when goals are not being accomplished

### Community Vision and Planning Time Intervals

